



Feature -


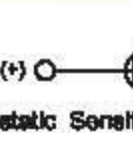
- water proof IP67 sealed
- SPST, momentary function
- snap in panel mount installation
- bi-color LED illuminated available

Application -

- automotive industry
- office appliances
- communication equipments
- racing helmet

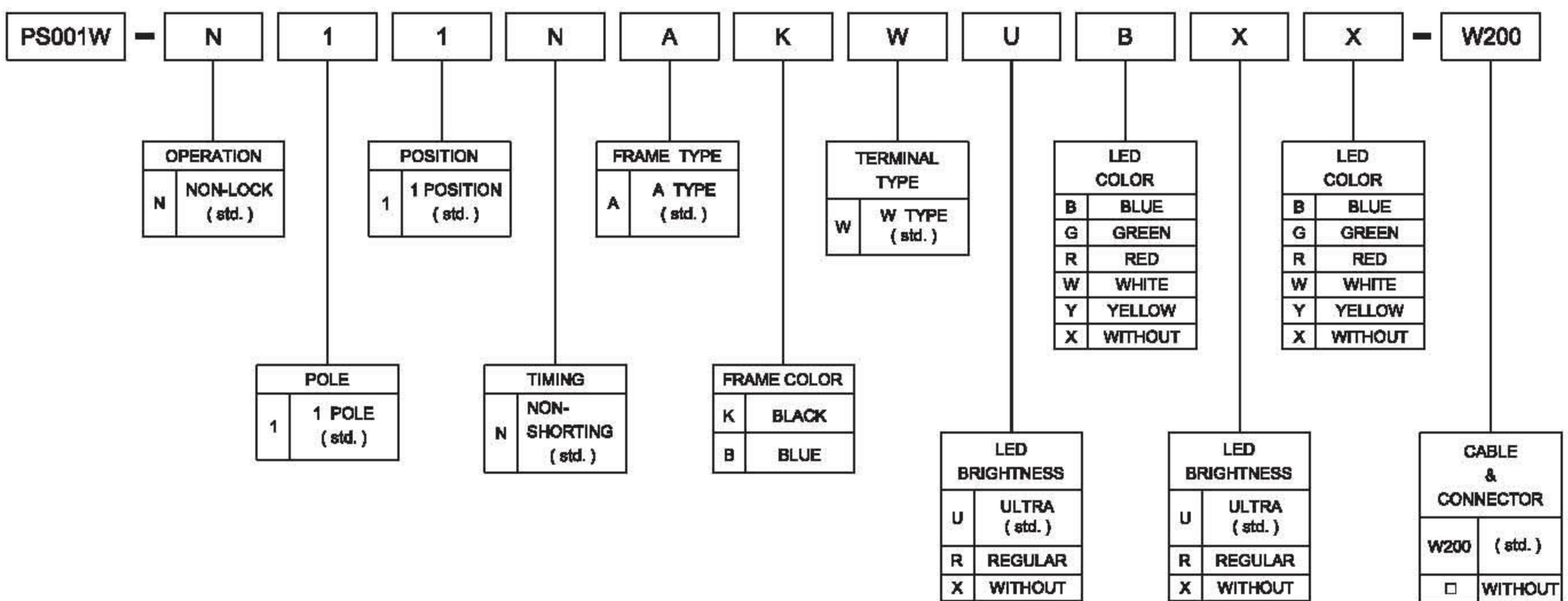
SPECIFICATIONS

SWITCH SPECIFICATIONS	
POLE - POSITION	Momentary Type , SPST with LED
CONTACT RATING	30 V DC , 0.1 A
CONTACT RESISTANCE	50 mΩ MAX. 1.5 V DC ; 100 mA , by Method of Voltage DROP
INSULATION RESISTANCE	100 MΩ MIN. 500 V DC
DIELECTRIC STRENGTH	Breakdown is not Allowable ; 500 V AC for 1 Minute
OPERATING FORCE	400 ± 100 gf
OPERATING LIFE	50,000 cycles
OPERATING TEMPERATURE RANGE	-40°C ~ 85°C
TOTAL TRAVEL	1.0 ± 0.3 mm
SEALING	IP67

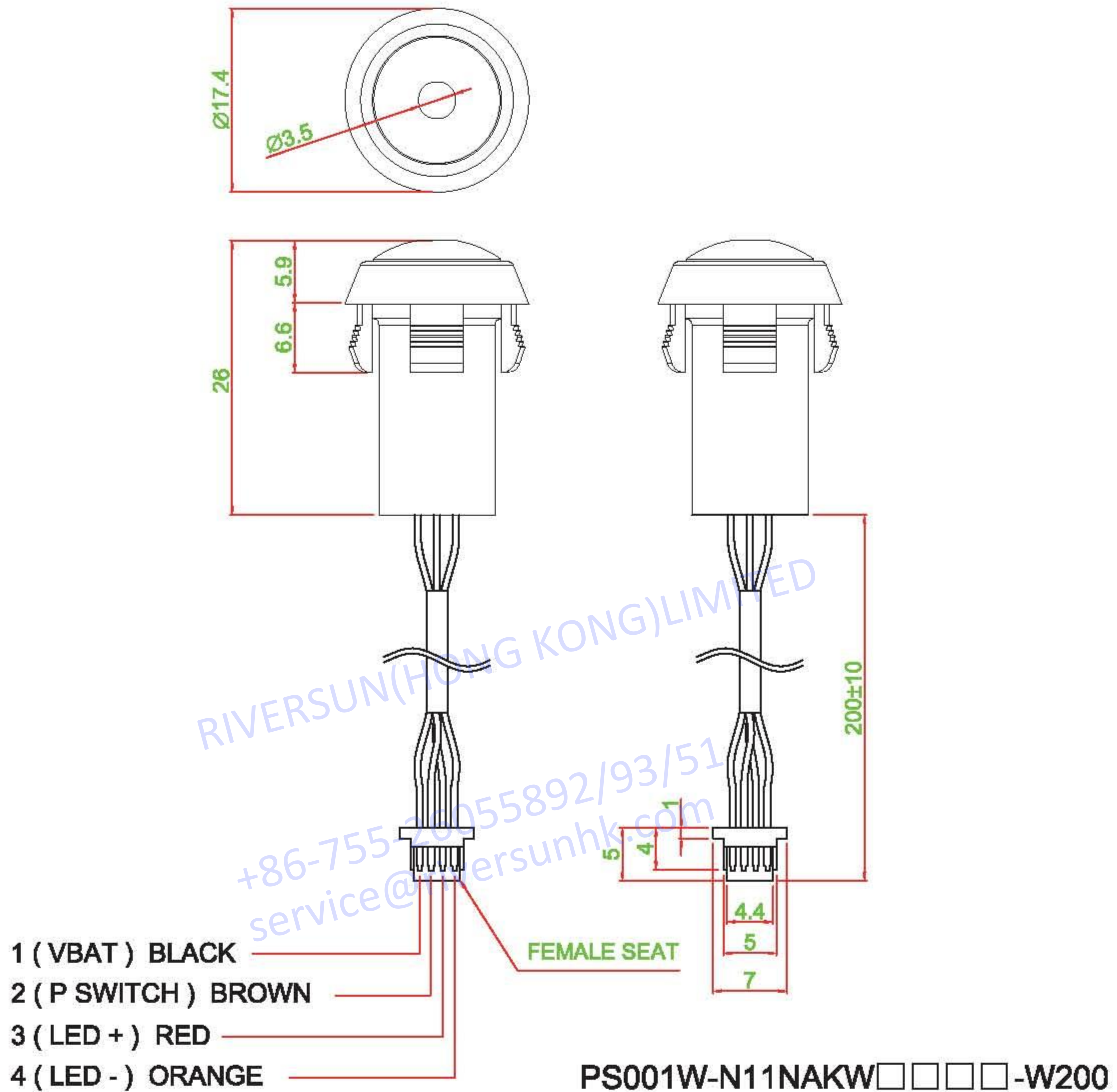
LED SPECIFICATIONS		Unit	Value / LED Color			
			Blue	Green	Red	Yellow
 ATTENTION  LEDs are Electrostatic Sensitive devices						
FORWARD CURRENT	I _f	mA	20	20	20	20
REVERSE VOLTAGE	V _r	V	5.0	5.0	5.0	5.0
REVERSE CURRENT	I _r	μA	10	10	10	10
FORWARD VOLTAGE@20mA	V _f	V	3.3-4.0	2.1-2.5	2.0-2.5	2.0-2.5
LUMINOUS INTENSITY@20mA	I _v	mcd	1300	700	900	700

Physical and electrical information of LED will be provided upon customer's request on switches .

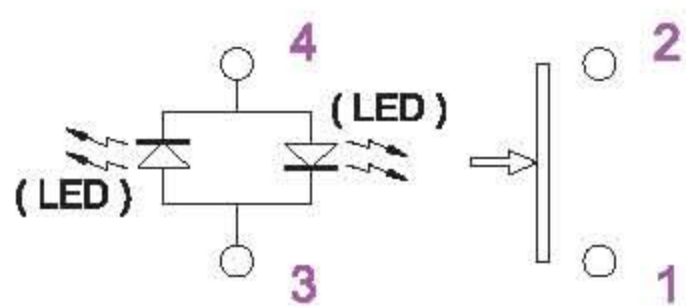
HOW TO ORDER



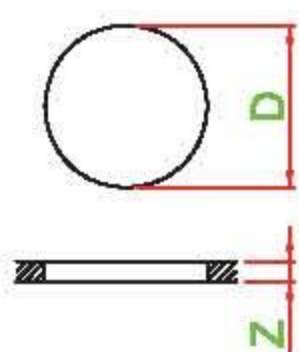
▶ DIMENSION



▶ LED CIRCUIT DIAGRAM



▶ PANEL CUT OUT



Z	D
1.0 ~ 2.0	15.2 ~ 15.4
2.0 ~ 2.5	15.4 ~ 15.8
2.5 ~ 3.0	15.8 ~ 16.0

▶ MATERIAL

- COVER : PA + GF
- ACTUATOR : PC
- BASE FRAME : PA + GF
- TERMINAL : BRASS GOLD FLASH