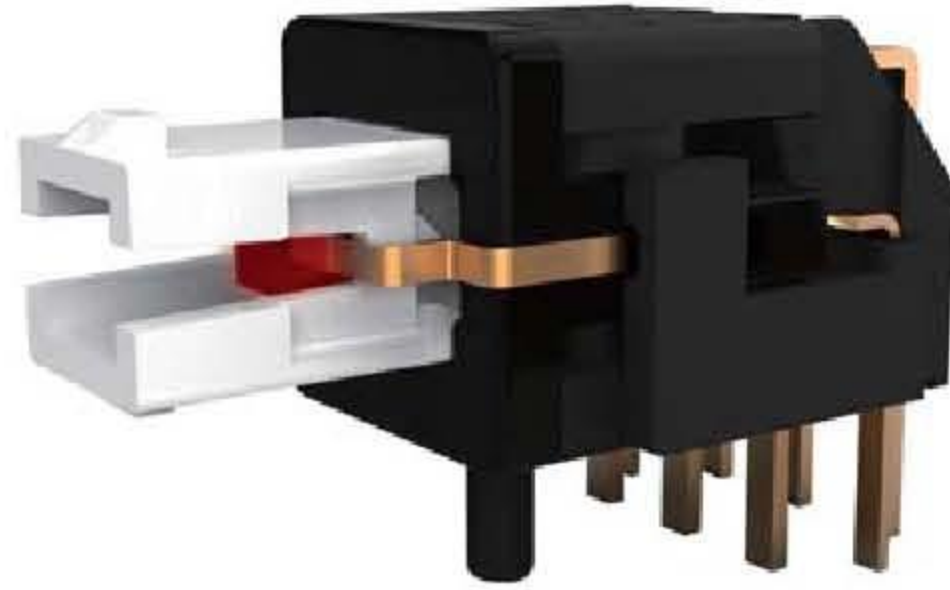


PS020L SERIES
LED PUSH BUTTON SWITCH



Feature -



- small size push switch (6x6 mm)
- bi-color LED illuminated available
- lock / non-lock function

Application -

- consumer products
- computer products
- instrumentation
- communication equipments

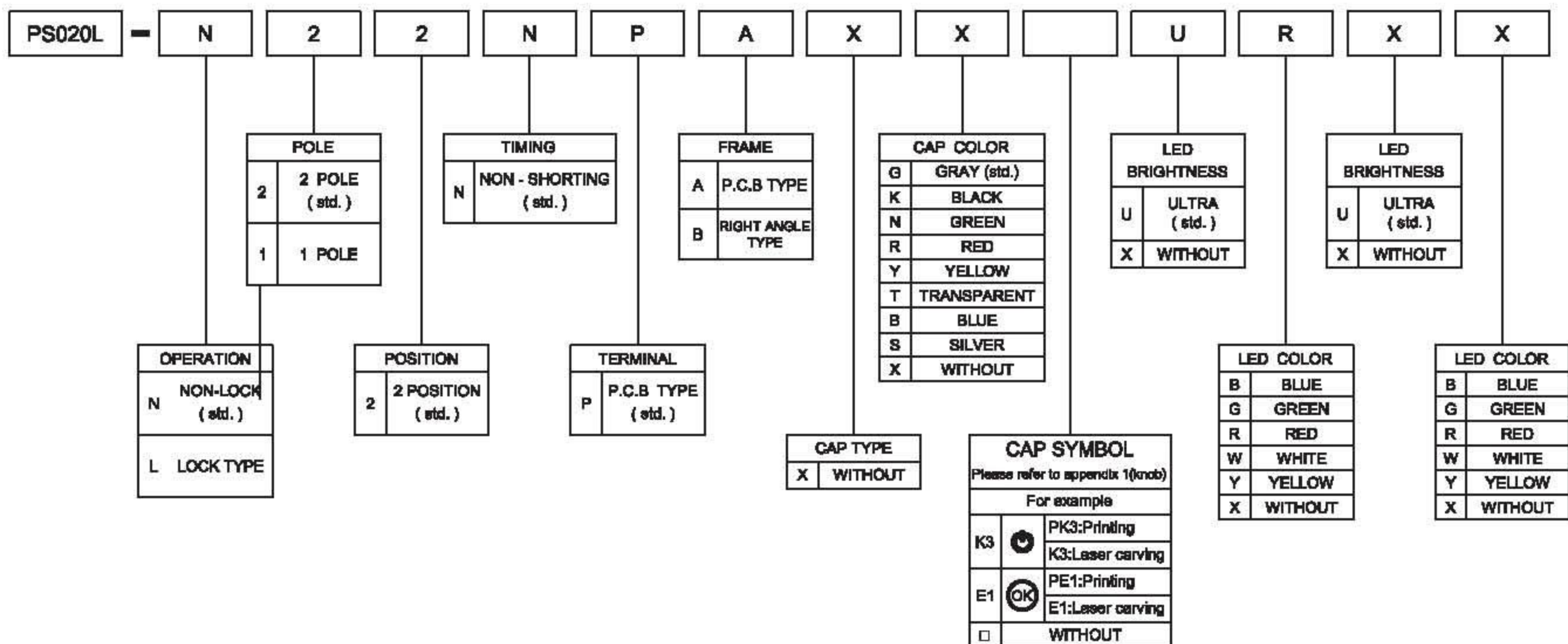
► **SPECIFICATIONS**

SWITCH SPECIFICATIONS	
POLE - POSITION	SPDT , DPDT
CONTACT RATING	12 V DC , 50 mA
CONTACT RESISTANCE	100 mΩ MAX. 1.5 V DC ; 100 mA , by Method of Voltage DROP
INSULATION RESISTANCE	100 MΩ MIN. 500 V DC for 1 minute
DIELECTRIC STRENGTH	Breakdown is not Allowable ; 500 V AC for 1 Minute
OPERATING FORCE	250 ± 50 gf
OPERATING LIFE	50,000 cycles
OPERATING TEMPERATURE RANGE	-20°C ~ 70°C
TOTAL TRAVEL / OPERATING TRAVEL	2 ± 0.3 mm / 1.3 ± 0.3 mm

LED SPECIFICATIONS						
 ATTENTION LEDs are Electrostatic Sensitive devices		Unit	Value / LED Color			
			Blue	Green	Red	Yellow
FORWARD CURRENT	I_f	mA	20	20	20	20
REVERSE VOLTAGE	V_r	V	5.0	5.0	5.0	5.0
REVERSE CURRENT	I_r	μA	10	10	10	10
FORWARD VOLTAGE@20mA	V_f	V	3.3-4.0	2.1-2.5	2.0-2.5	2.0-2.5
LUMINOUS INTENSITY@20mA	I_v	mcd	1300	700	900	700

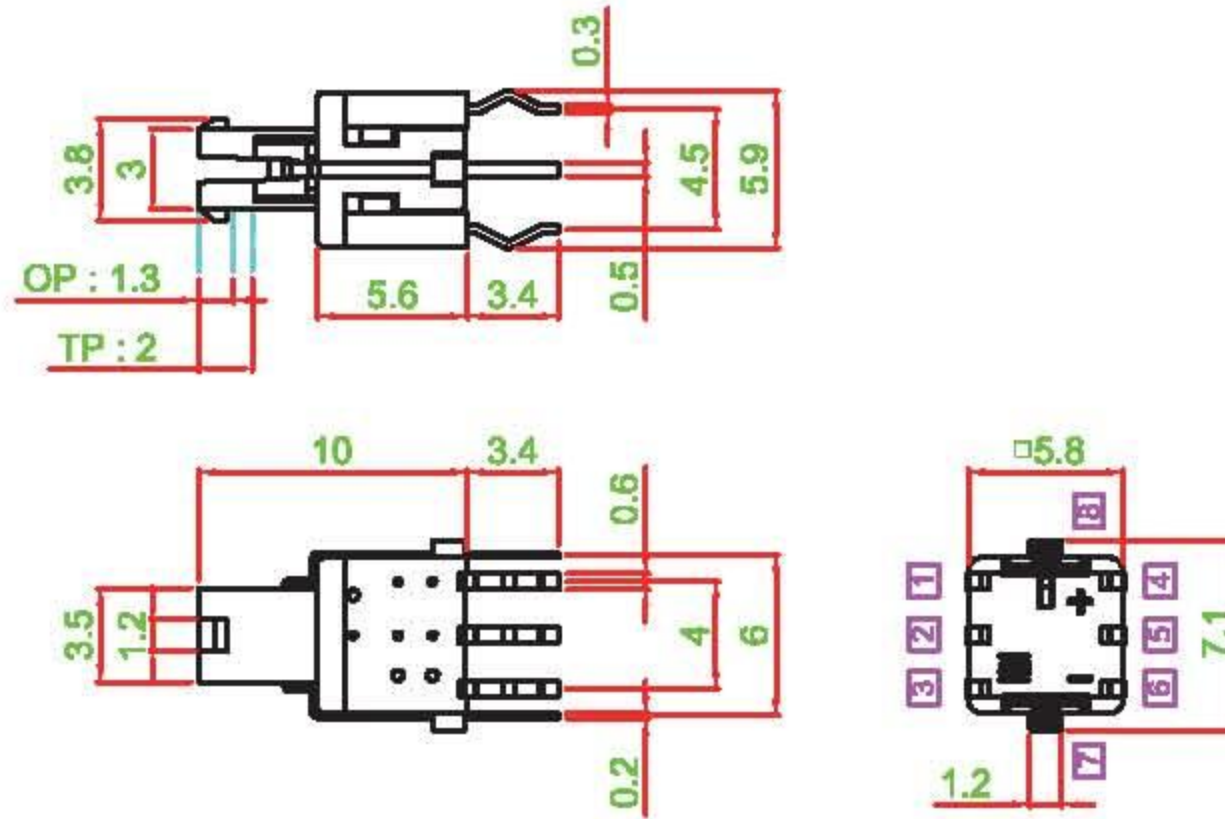
■ Physical and electrical information of LED will be provided upon customer's request on switches .

► **HOW TO ORDER**

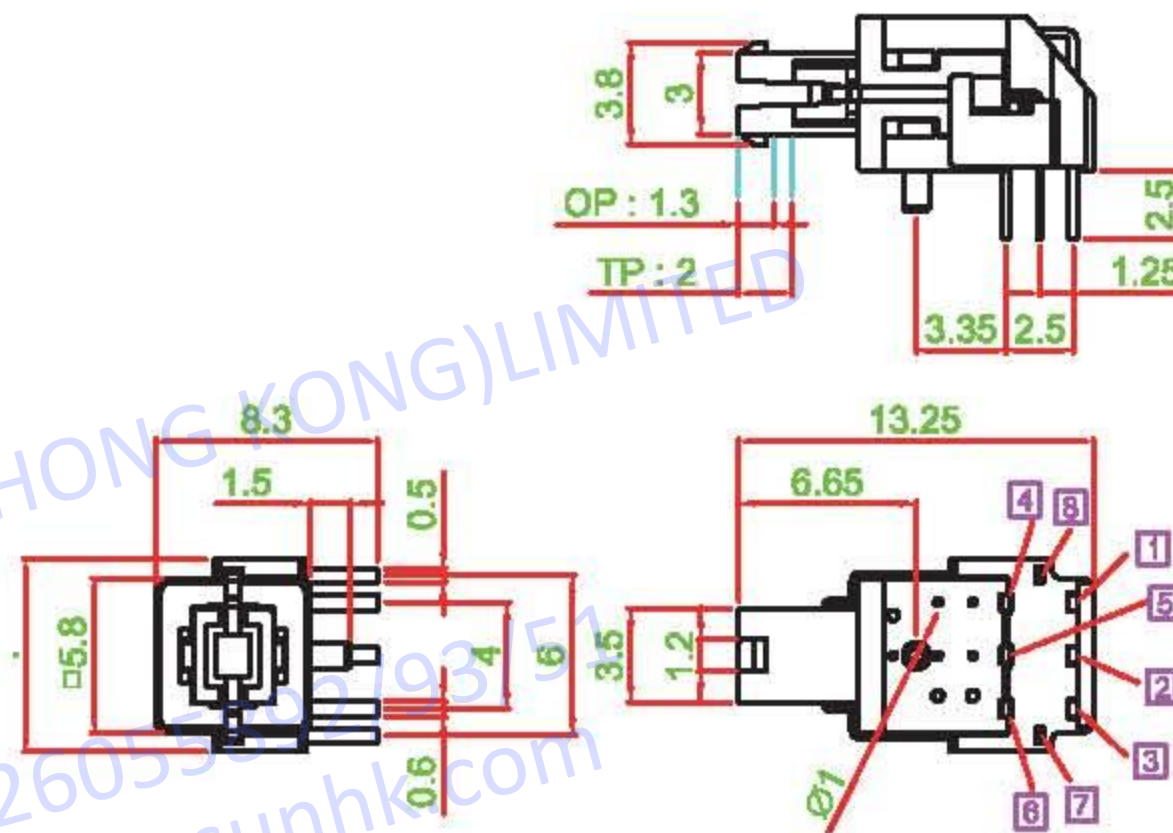


► DIMENSION

PS020L-L22NPAXX□□□□

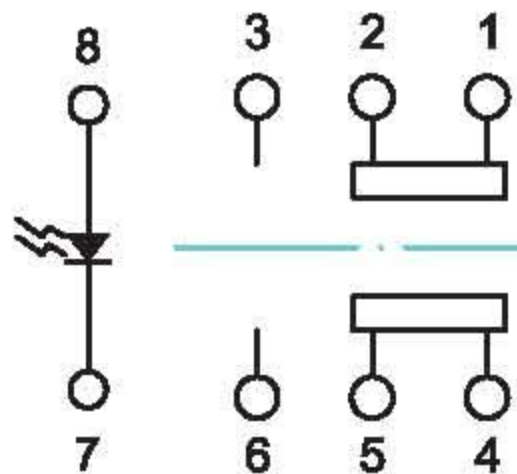


PS020L-L22NPBXX□□□□

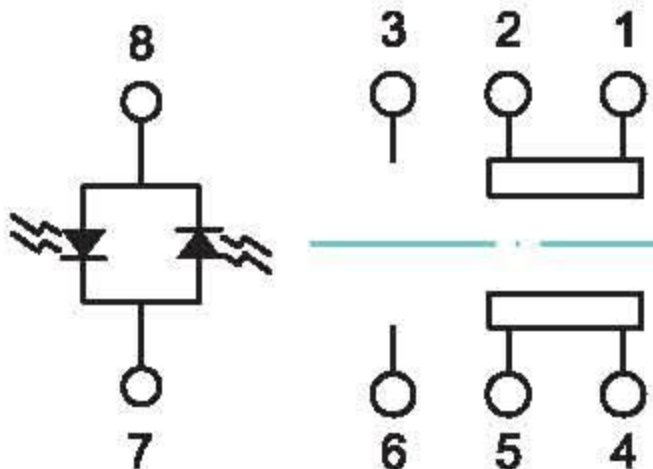


► SCHEMATIC

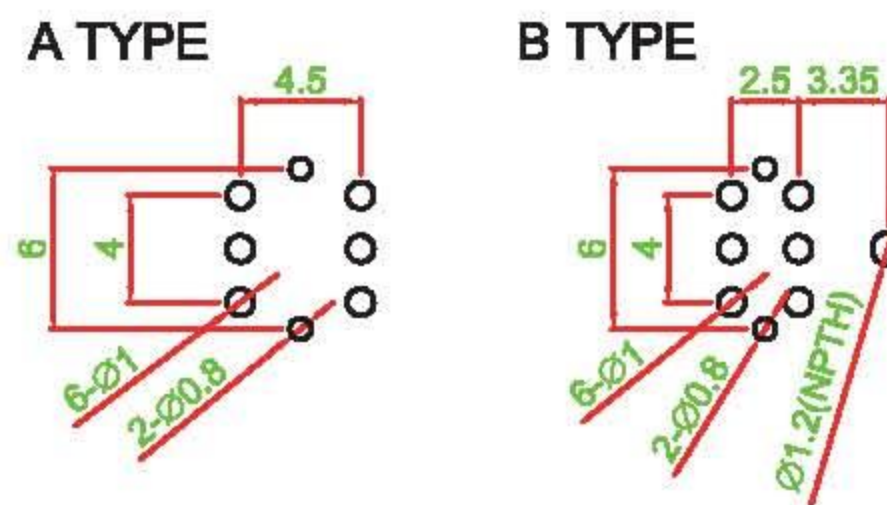
SINGLE COLOR



TWO COLOR



► P.C.B LAYOUT



► MATERIAL

- ACTUATOR : PA + GF
- TERMINAL : BRONZE SILVER PLATING
- FRAME : PA + GF
- SPRING : STAINLESS STEEL

