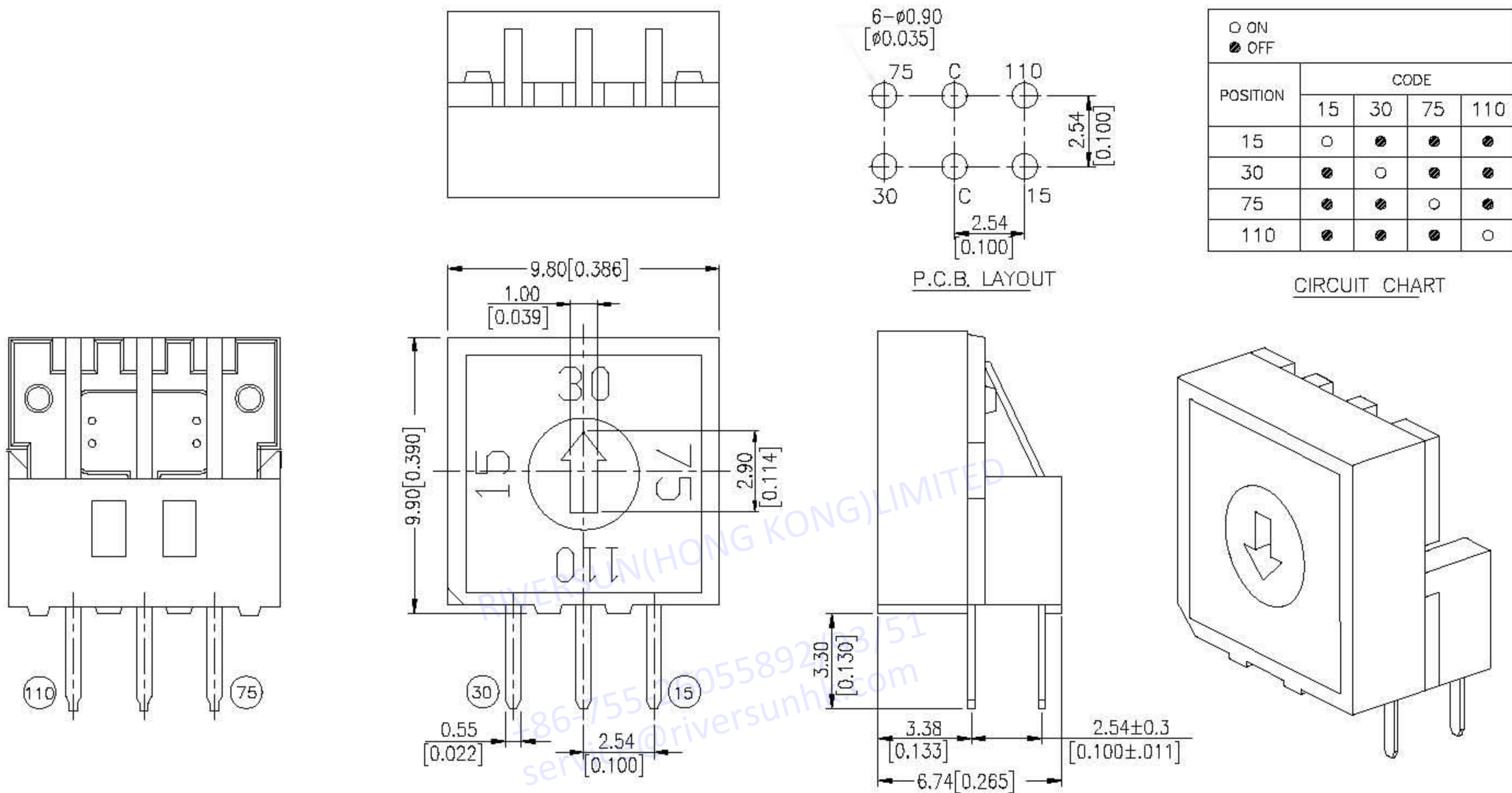


SELECTOR SWITCH SERIES



DIMENSIONS

SV3A-4R-V



HOW TO ORDER

S V 3 A - 4 R - □ - □

- Package Style:
B = Tube Package
- V=Lead Free
Q=Halogen Free
- Number Of Steps
4 = 4 Steps .
- Terminal Plating
A = Gold Plating Over Nickle
- Number of Terminals
3=3x3
- Termination Type:
V = Right Angle
- S = Selector Type

SPECIFICATIONS

△MECHANICAL

Mechanical Life: 200mΩ max. 20,000 steps
 Operating Force: 200gf-cm max.

△ENVIRONMENTAL

Operating Temperature: -25°C to +80°C
 Storage Temperature: -40°C to +85°C

△ELECTRICAL

Electrical Life: 200mΩ max. 20,000 steps
 Non-Switching Rating: 100mA, 50VDC
 Switching Rating: 25mA, 24VDC
 Contact Resistance: (a) 100mΩ max. (initial)
 (b) 200mΩ (final – after test)
 Insulation Resistance: 100MΩ min. at 250VDC
 Voltage Proof: 250VAC for 1 minute

MATERIAL

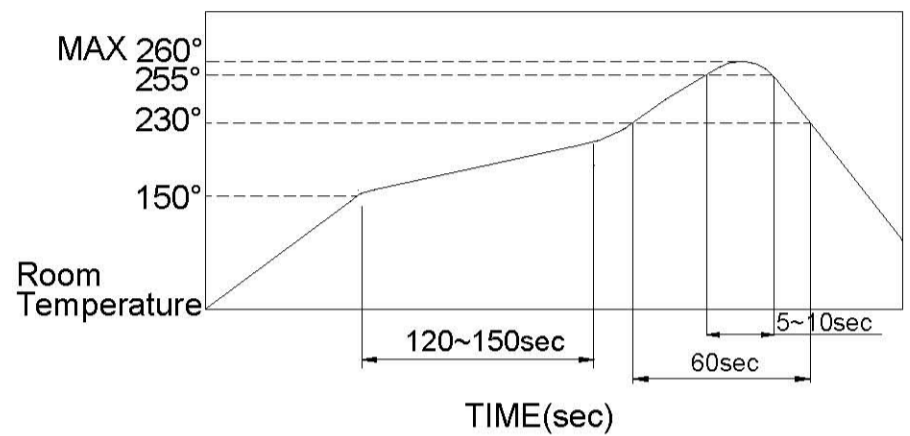
△BASE & COVER: UL 94V-0 High-temp Thermoplastic
 Color: White
 △ACTUATOR: UL 94V-0 High-temp Thermoplastic
 Color: White
 △CONTACT: Alloy copper with gold plated over nickle
 △TERMINAL: Brass with gold plated

SOLDERING PROCESS

△HAND SOLDERING : Use a soldering iron of 30 watts, controlled at (350°C) approximately max 5 seconds.

△WAVE SOLDERING: Recommended temperature at 500°F (260°C) max. 5 seconds. (For through hole type).

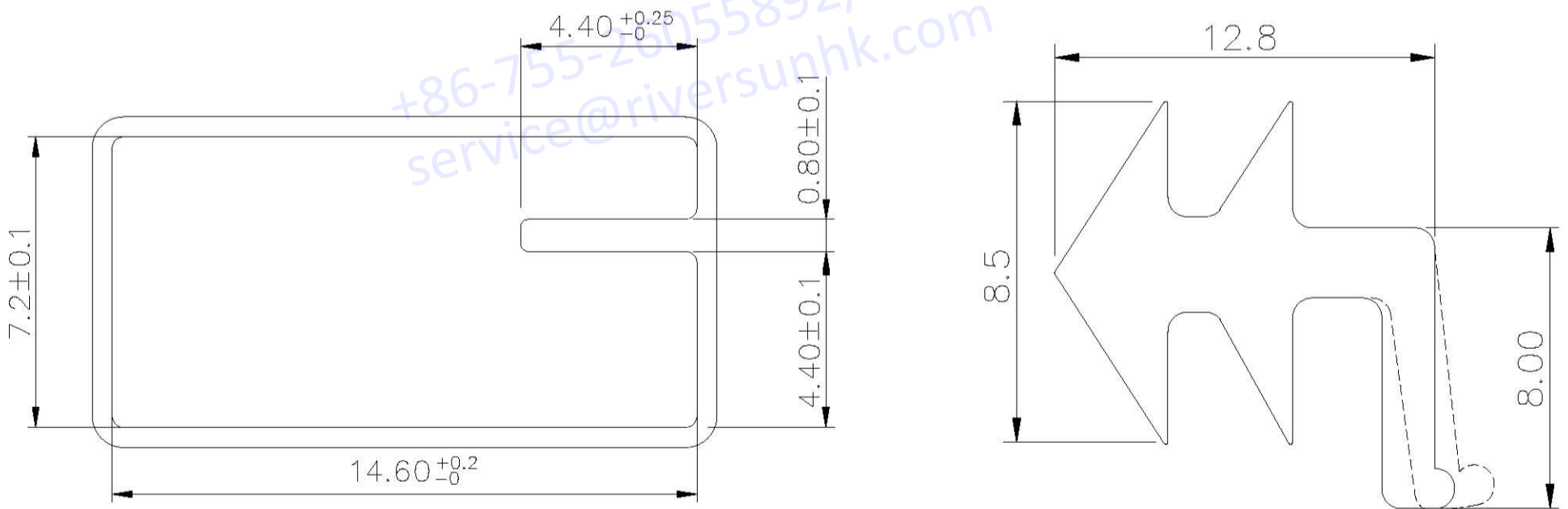
△REFLOW SOLDERING: When applying reflow soldering, the peak temperature of the reflow oven should be set to 260°C max.



PACKING

Part Number	Number Per Tube	Number Per Reel
SV3A-4R	80	

SV TUBE



General Tolerance : ±0.2mm