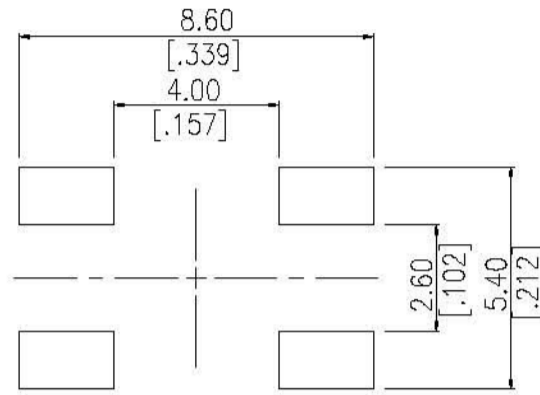
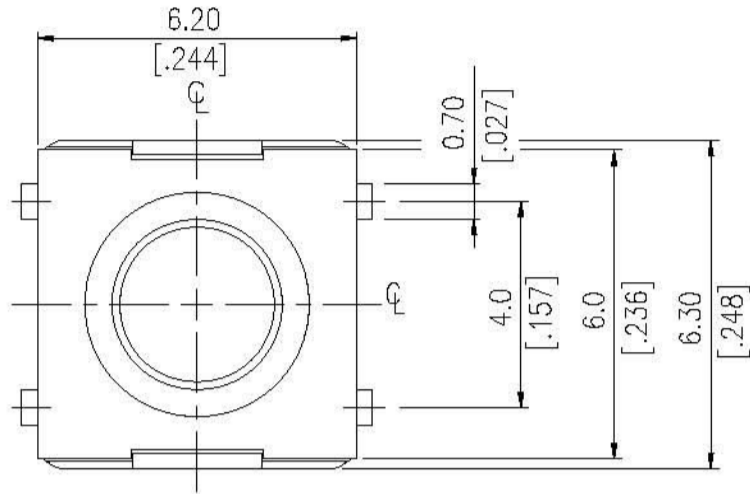


DTSJW-6 SERIES

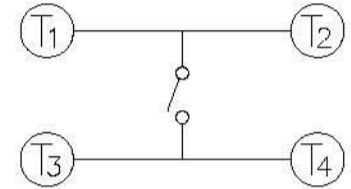


DIMENSIONS

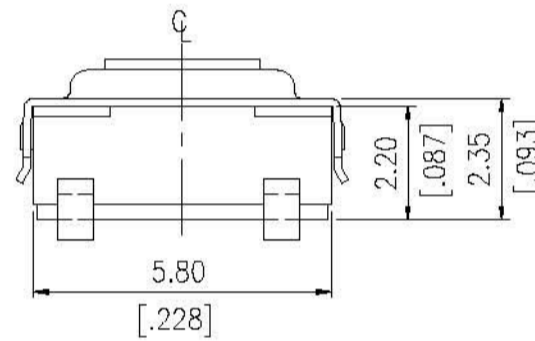
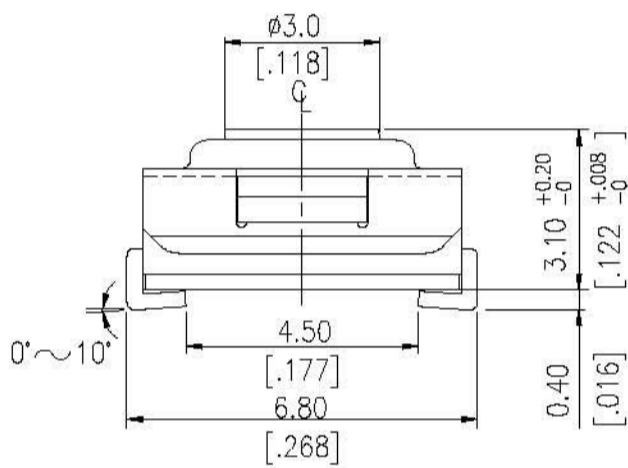
DTSJW-66



P.C.B. LAYOUT SCALE 8:1



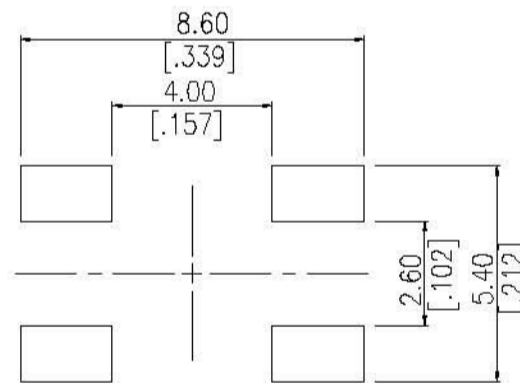
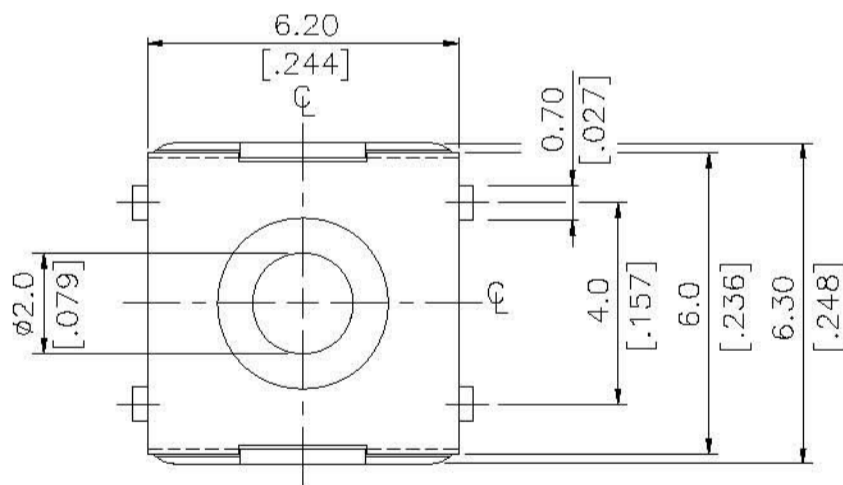
CIRCUIT DIAGRAM



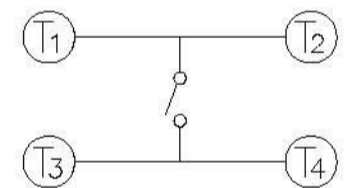
TEL: +86-755-26055892/93/51
 EMAIL: service@riversunhk.com
 WEB: www.riversunhk.com

General Tolerance : ±0.2mm

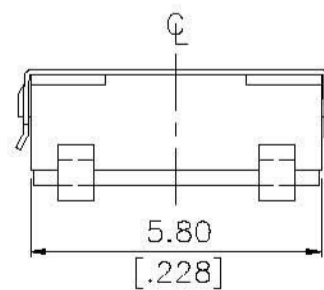
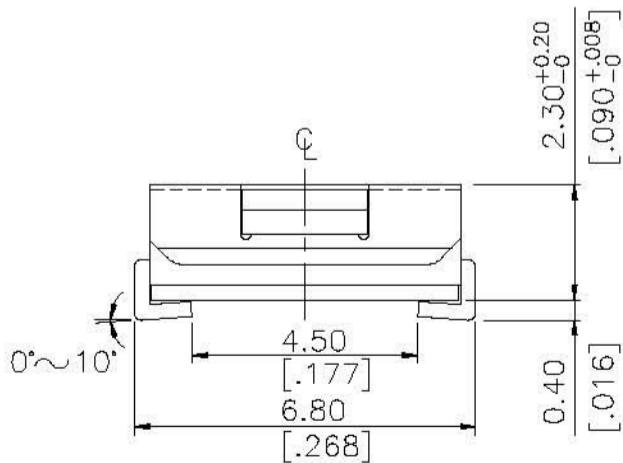
DTSJW-68



P.C.B. LAYOUT SCALE 8:1

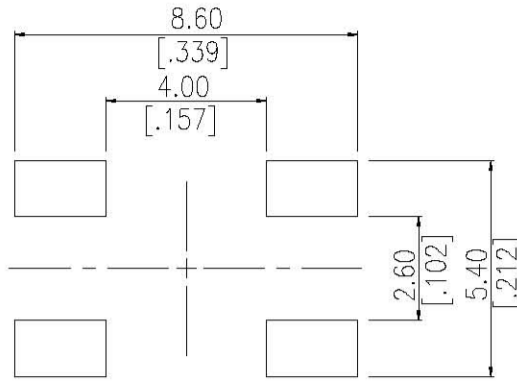
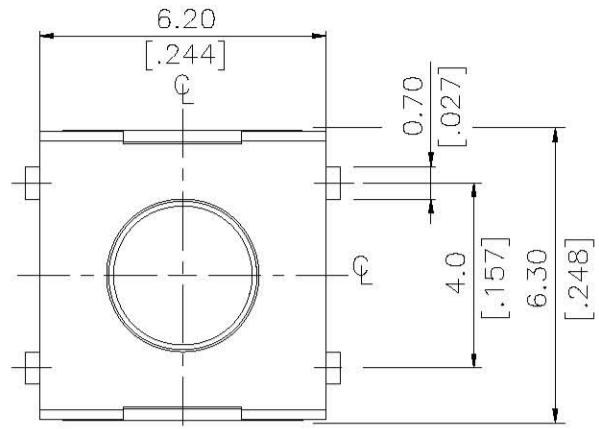


CIRCUIT DIAGRAM

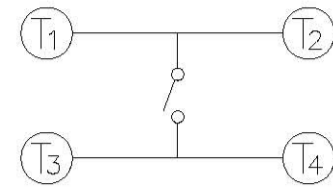


General Tolerance : ±0.2mm

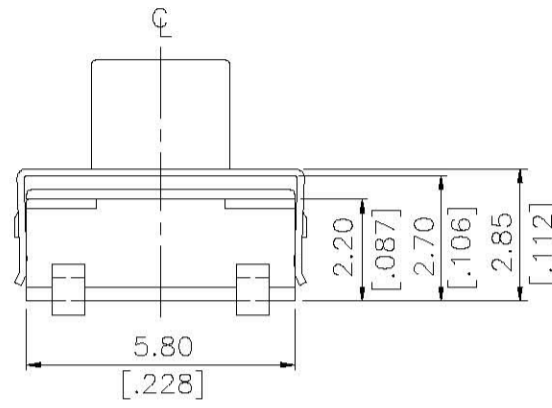
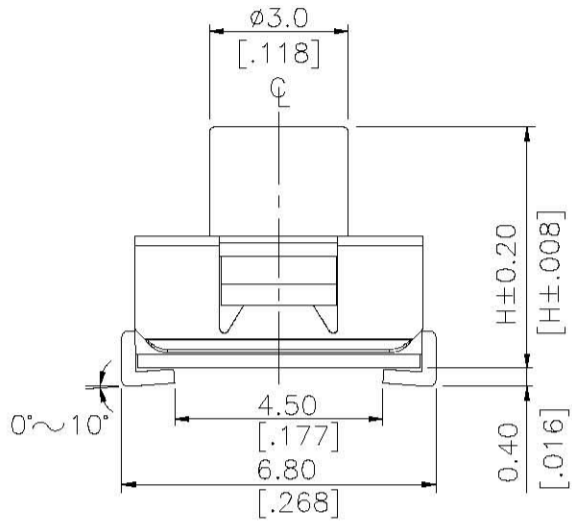
DTSJW-69.67.65.64



P.C.B. LAYOUT SCALE 8:1



CIRCUIT DIAGRAM



DTSJW-64□-V	4.5mm[.177]
DTSJW-65□-V	3.5mm[.138]
DTSJW-69□-V	3.8mm[.150]
DTSJW-67□-V	5.2mm[.205]
PART NO:	H

General Tolerance : ±0.2mm

TEL: +86-755-26055892/93/51
 EMAIL: service@riversunhk.com
 WEB: www.riversunhk.com

HOW TO ORDER

DTS J W - 6 □ □ - □ - □

Package Style:
B = Tube
T/R = Tape & Reel

V=RoHS & Lead Free Solderable
Q=Halogen Free

Operating Force:
▲ N = Brown, 160g (66N)
180gf (69N, 67N, 677N, 65N,64N)
S = Silver, 160gf(68S)
R = Red, 260gf(69R,67R,66R,65R,64R)
T = Transparent, 360gf (69T, 67T,65T, 677T)

Dimension H:
4 = 4.5mm (N,R)
5 = 3.5mm (N,R,T)
6 = 3.1mm (N,R)
7 = 5.2mm (N,R,T)
77 = 7.7mm (N,T)
8 = 2.3mm (S)
9=3.8mm(N,R,T)

Washable
J S.M.T

SPECIFICATION

△MECHANICAL

Operation Force:

360± 90gf, Transparent (T), 69, 67, 65, 677
260± 70gf, Red (R), 69, 67, 65, 64
180± 50gf, Brown (N), 69, 67, 65, 64, 677
160 ± 50gf, Brown (N), 66
160 ± 50gf, Silver (S), 68

Stop Strength: Max 3kgf vertical static load continuously
for 15 seconds

Stroke: 0.25 +0.2/ - 0.1 mm 66N, 66R, 677, 68S
0.45±0.2mm, [67, 65N/R] , [64, 65N/R/T]
0.6±0.2mm, 69, 67T

Operation Temperature: -25°C to +70°C

Storage Temperature: -30°C to + 80°C

△ELECTRICAL

Electrical Life:

500,000 cycles for 69, 67, 65, 64

100,000 cycles for 66, 68

Rating: 50mA, 12VDC

Contact Resistance: 100mΩ max.

Insulation Resistance: 100MΩ min. at 500VDC

Dielectric Strength: 250VAC/ minute

Contact Arrangement: 1 pole 1 throw

MATERIAL

△COVER: Stainless steel

△TERMINAL: Brass with silver plated

△BASE: UL94V-0 Nylon High-Temp. Thermoplastic
Color: Black

TEL:+86-755-26053892/93/51
EMAIL:service@riversunhk.com
WEB:www.riversunhk.com

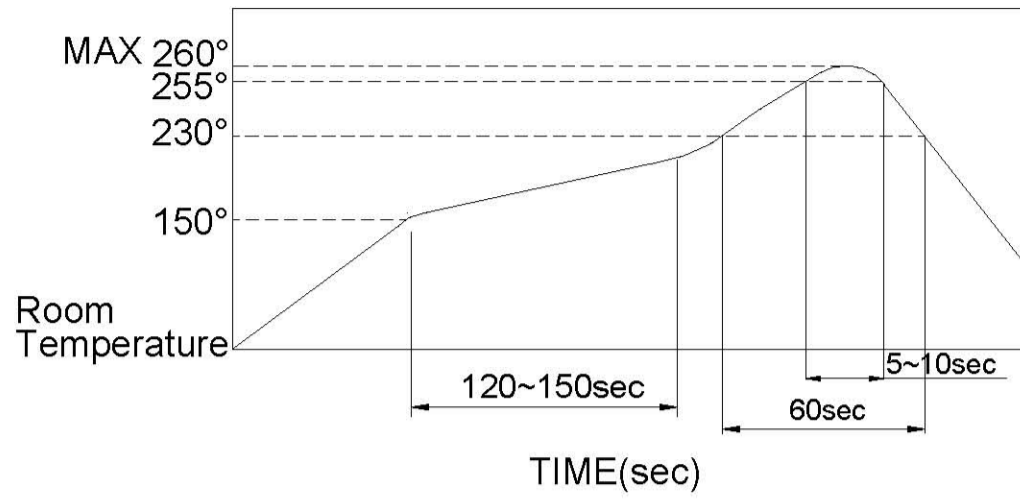
ITEM NO.	DTSJW-66N	DTSJW-68S	DTSJW-69,65,64N(R)	DTSJW-67N(R)T
STEM	High-Temp Thermoplastic Nylon UL94V-0 Color : Brown (N), 160gf	None	Silicone Rubber	Silicone Rubber
ADHESIV TAPE	TEFLON	TEFLON(standard) KAPTON(V-option)	None	None
METAL STEM	Brass with Nickel plated	Brass with Nickel plated	None	None
FILLER	None	None	None	Nylon
CONTACT	Stainless steel			

SOLDERING PROCESS

△HAND SOLDERING : Use a soldering iron of 30 watts, controlled at 350°C approximately max 5 seconds while applying solder.

△SOLDERING : Vapor phase & reflow soldering can be applied

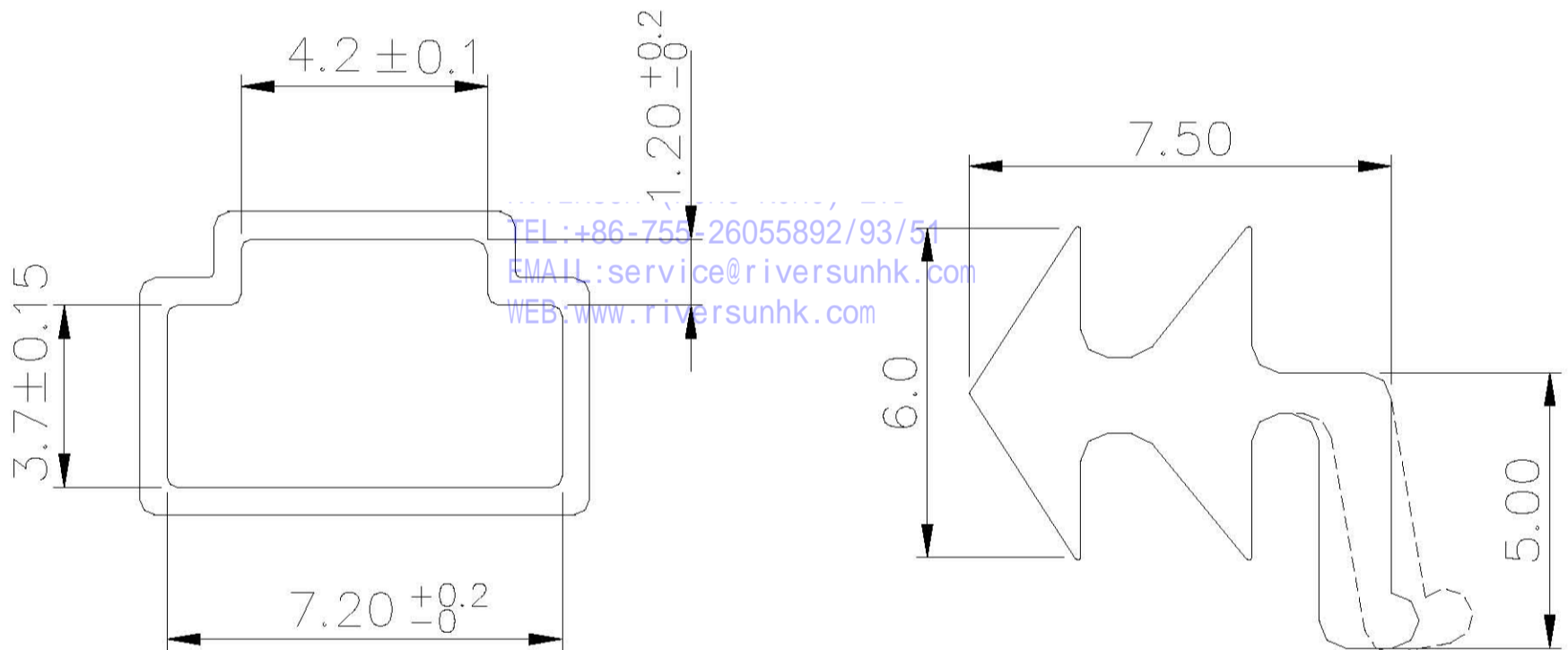
△ Temperature Profile:



PACKING

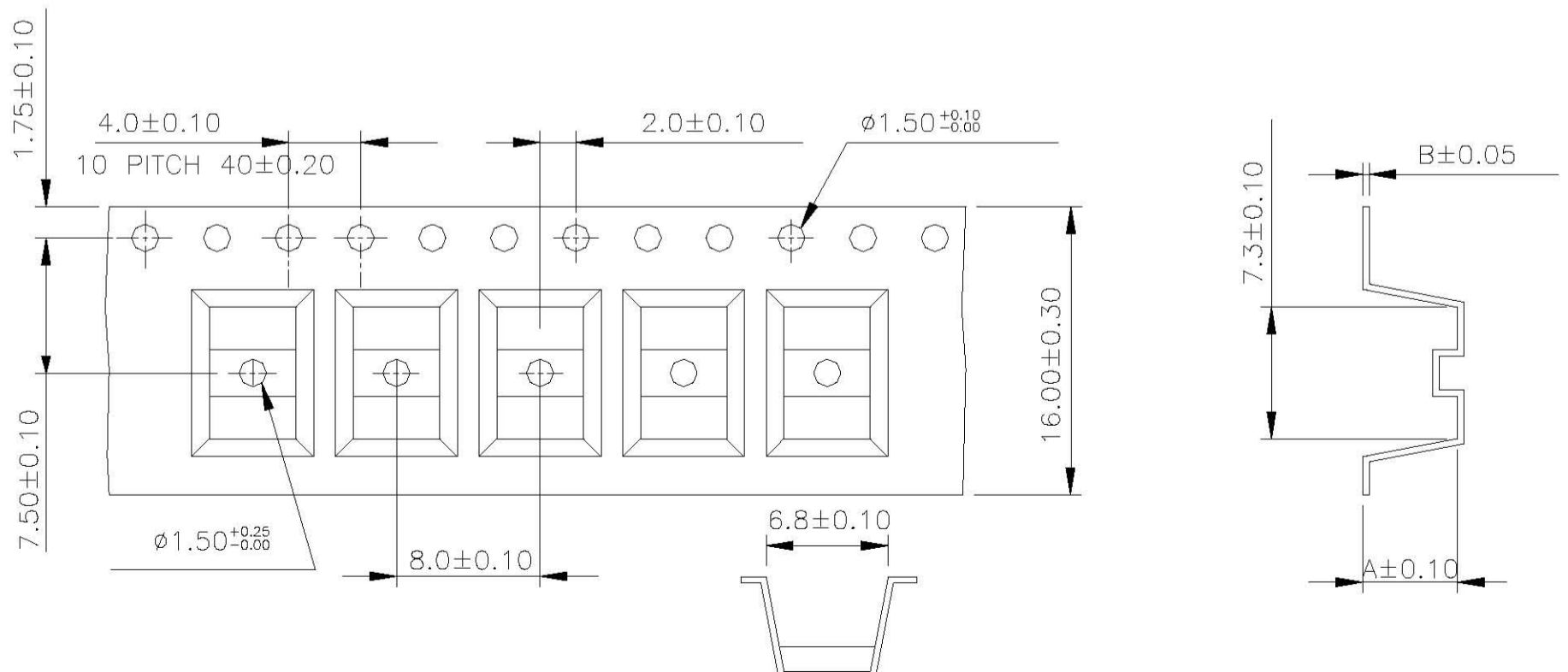
Part Number	Number Per Tube	Number Per Reel
DTSJW-66	75	1900
DTSJW-68	75	2700
DTSJW-69	75	1800
DTSJW-65	75	1900
DTSJW-67	75	900
DTSJW-64	-	900

TUBE



General Tolerance : ±0.2mm

REEL



General Tolerance : ±0.1mm