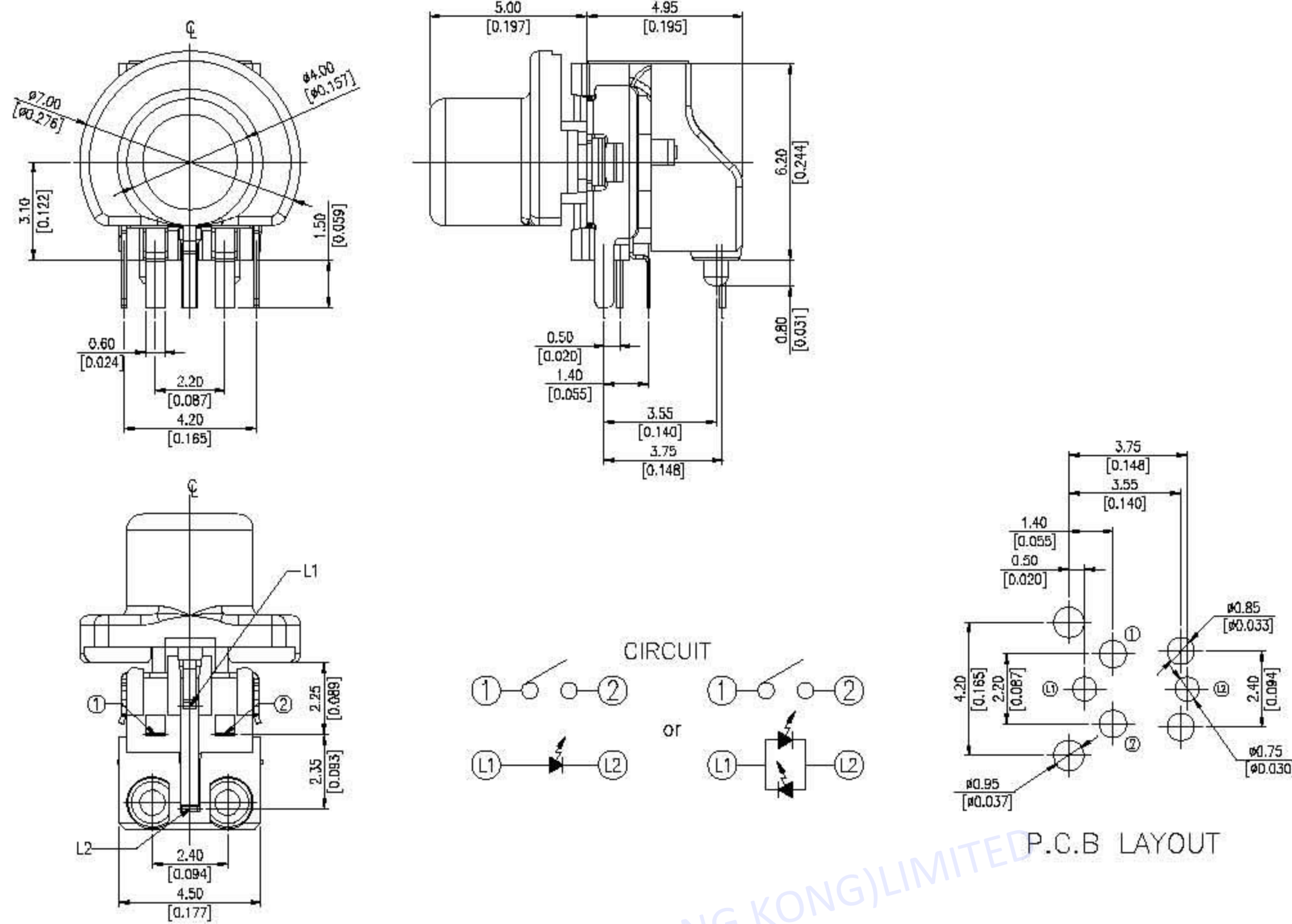


ML3 SERIES



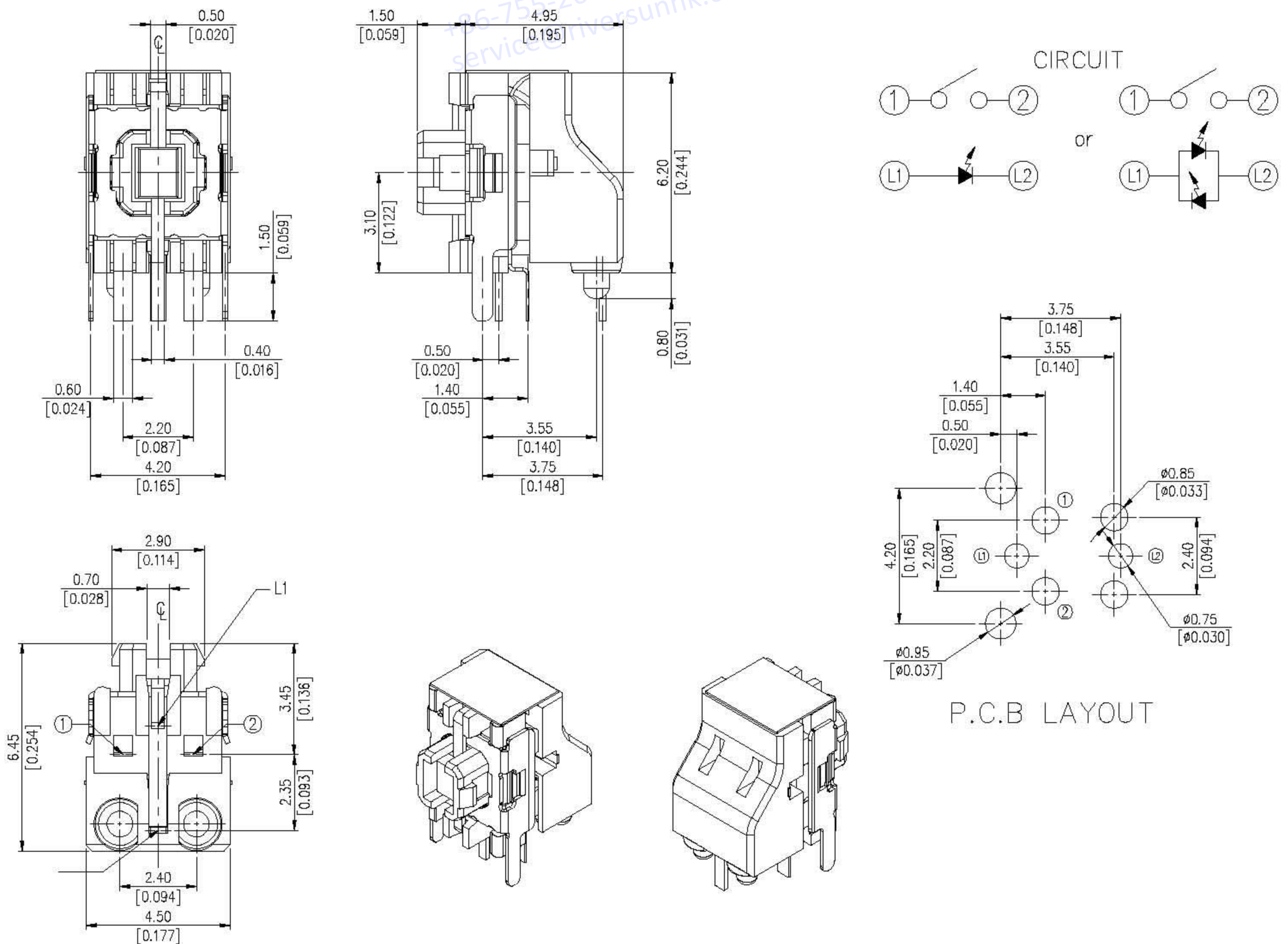
DIMENSION

ML3-AG□H□-□WT-Q



General Tolerance : $\pm 0.2\text{mm}$

ML3-AG□H□-□-Q



HOW TO ORDER

ML3 - AG H - - - - Q - R

Type: _____
 AG=Right Angle+Ground Terminal

Force: _____
 2=160±50g
 3=250±100g

Terminal: _____
 H=Through Hole

LED Color: _____
=Without LED
 B=Blue
 GY=Green+Yellow

Contact Plating: _____
=Ag Plating
 A3=Au Plating

Cap Type: _____
 =Without Cap
 A=Silicone , 4.7mm
 B=Silicone , 5.7mm

Cap Color _____
 WT=Transparent White

Package:
 R=Tape & Reel
 Halongen Free

SPECIFICATION

△MECHANICAL

- Operation Force : 160±50gf
- Stroke : 0.20±0.10mm
- Operation Temperature Range : -40°C to +85°C
- Preservative Temperature Range Single condition : -40°C to +85°C

△ELECTRICAL

- Electrical Life : 300,000 cycles
- 50 mA, 12 VDC
- Contact Resistance : 500 mΩ max.
- Insulation Resistance : 100MΩ min.100 VDC
- Dielectric Strength: 250 VAC/1 minute

MATERIAL

- △BASE : High Temp Thermonplastic LCP
Color : White
- △CONTACT : Stainless Steel SUS301
- △TERMINAL : Brass with gold plating.
- △STEM : High TempThermoplastic LCP
Color : White
- △COVER : Stainless steel with silver plating.
- △CAP : Silicone
- △ADHESIVE TAPE : Kapton

SOLDERING PROCESS

△CLEANING:

1. Only Tape sealed types apply to wash process.
2. Do not remove the tape before wash process.
3. After soldering process, do not continue the wash process immediately. Please wait for at least 3 minutes.
4. Apply alcoholic solvents as cleaning agent do not use other solvents or water.
5. Ultrasonic cleaning is not recommended.
6. The cleaning process per stage is max. 1 minute and the whole cleaning time are not to exceed 3 minutes.
7. Do not impose any external force on switch while washing.

△ Any flux enters the switch may fail the conductivity.

△Reflow Temperature Profile: (reference)

PACKING

General Tolerance : ±0.1mm

Part Number	Number Per Tube	Number Per Tray
ML3	-	100