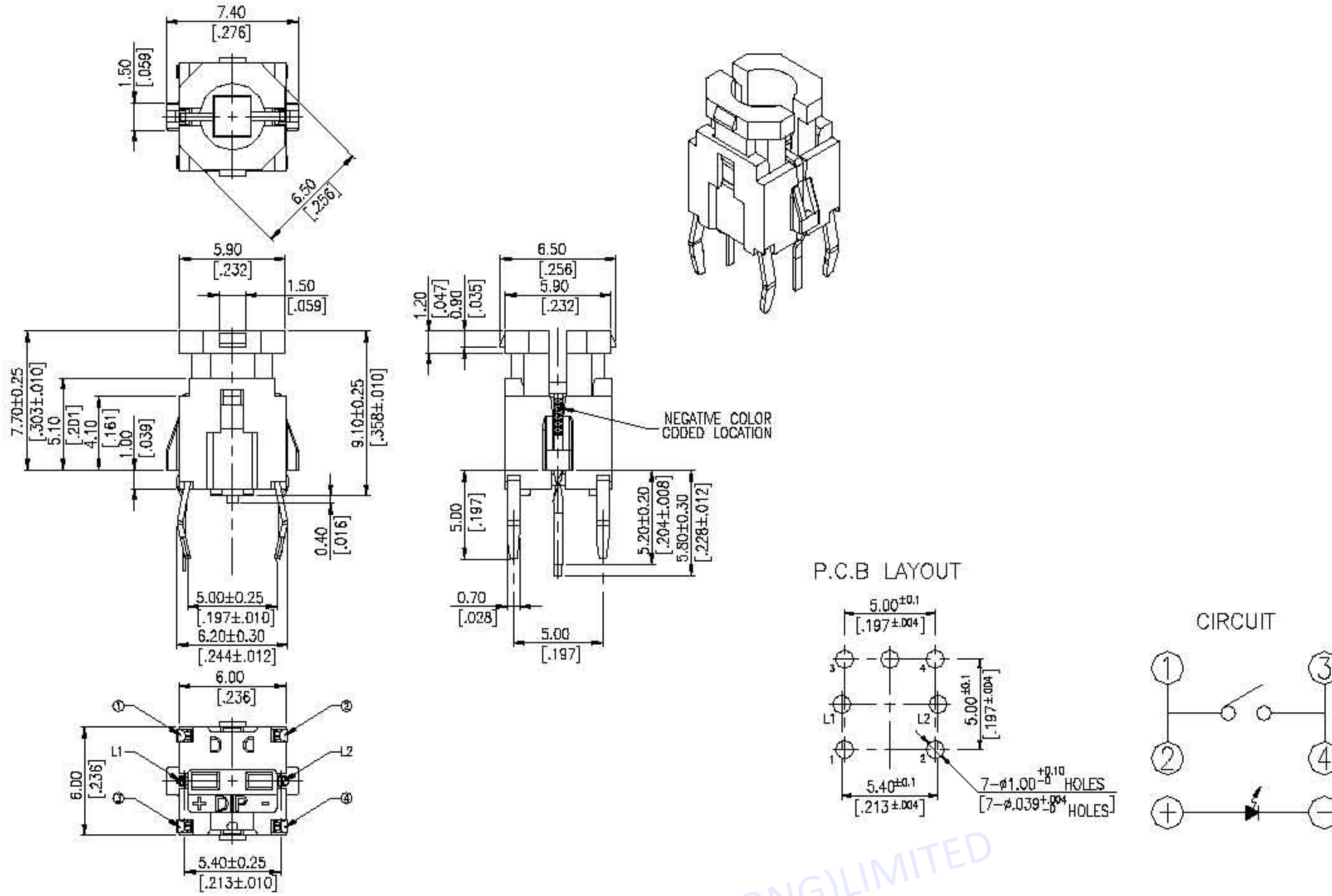


ML5 SERIES



DIMENSION

ML5



General Tolerance : $\pm 0.2\text{mm}$

HOW TO ORDER

ML5 - H - Q A

Solder Type:

H=Through hole

0=Without Cap

Cap Finish See Note:

=Without Cap

Operation Force:

3 = 200gf 4 = 200~350gf

STEM Color:

K=BLACK

W=WHITE

LED Color:

=Without LED

W=White WY= White/Yellow

Q=Halogen Free

Package:

A= TRAY

SPECIFICATION

△MECHANICAL

Operation Force : 200±70gf / 200~350gf

Stroke : 1.20±0.20mm

Operation Temperature Range : -40°C to +85°C

Preservative Temperature Range Single condition : -40°C to +85°C

△ELECTRICAL

Electrical Life : 50,000 cycles

50 mA, 12 VDC

Contact Resistance : 100 mΩ max.

Insulation Resistance : 100MΩ min.500 VDC

Dielectric Strength: 250 VAC/1 minute

MATERIAL

△BASE : High Temp Thermoplastic.
NYLON UL 94V-0

Color : BLACK

△CONTACT : Staniles Steel With Silver Cladding.

△TERMINAL : Brass with Silver plating.

△STEM : High Temp Thermoplastic.
NYLON UL 94V-0

Color : Black & White.

△SILICONE DOME : Silicone rubber.

SOLDERING PROCESS

△CLEANING:

1. Only Tape sealed types apply to wash process.
2. Do not remove the tape before wash process.
3. After soldering process, do not continue the wash process immediately. Please wait for at least 3 minutes.
4. Apply alcoholic solvents as cleaning agent do not use other solvents or water.
5. Ultrasonic cleaning is not recommended.
6. The cleaning process per stage is max. 1 minute and the whole cleaning time are not to exceed 3 minutes.
7. Do not impose any external force on switch while washing.

△ Any flux enters the switch may fail the conductivity.

△Reflow Temperature Profile: (reference)

PACKING

Part Number	Number Per Tube	Number Per Tray
ML5	-	140