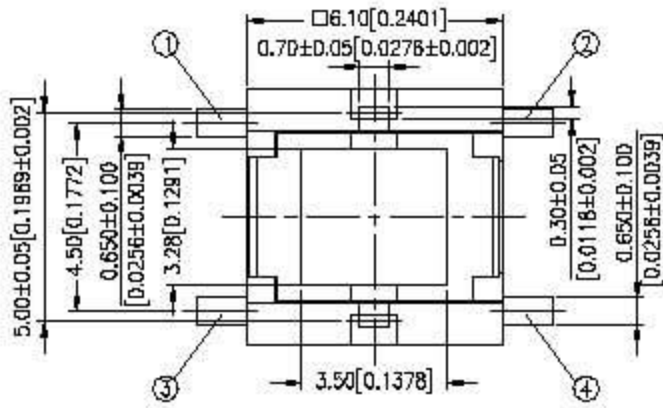


# TL(L)-6 SERIES

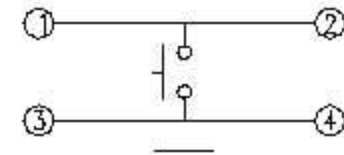


## DIMENSIONS

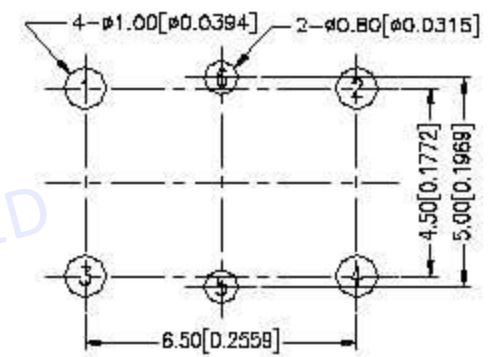
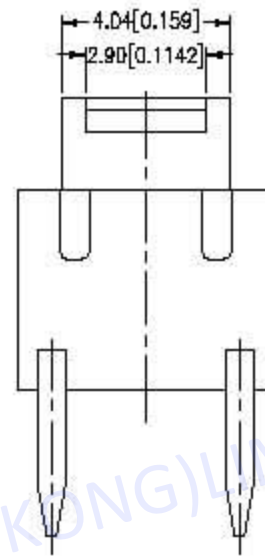
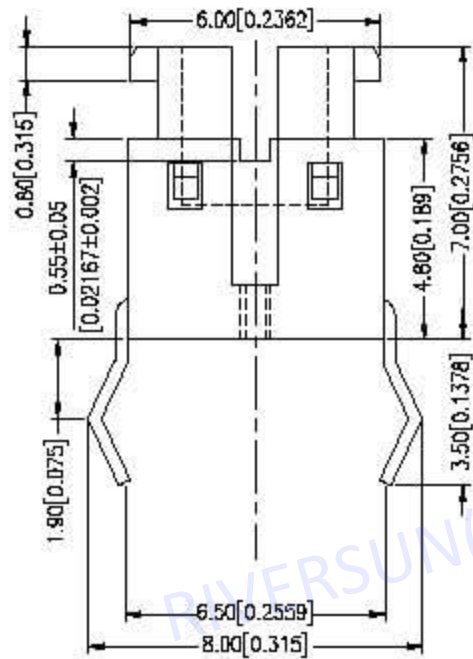
TL-6



Part No.	OF	Color
TL-61-V	100±50g	K-Black
TL-62-V	160±50g	N-Brown
TL-63-V	260±50g	W-White



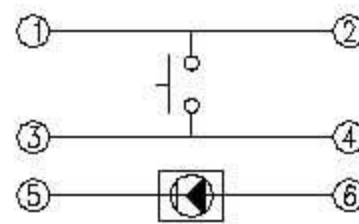
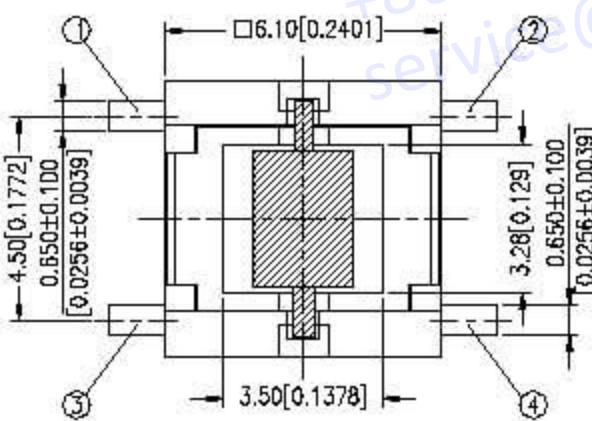
CIRCUIT DIAGRAM



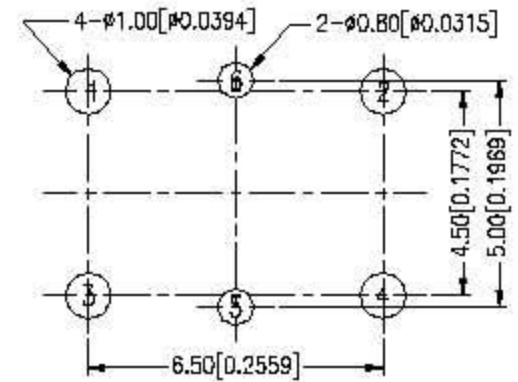
P.C.B LAYOUT

General Tolerance : ±0.2mm

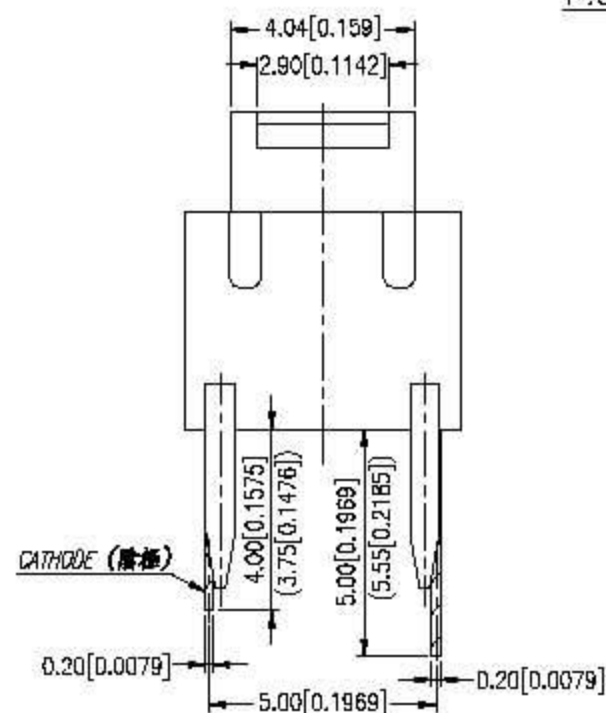
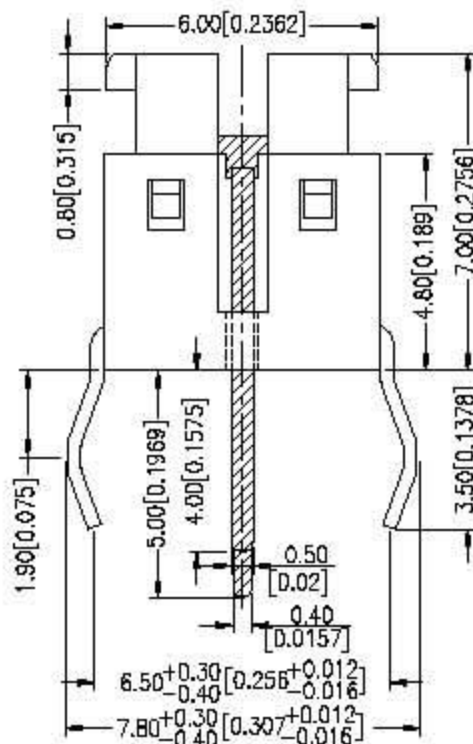
TLL-6A



CIRCUIT DIAGRAM

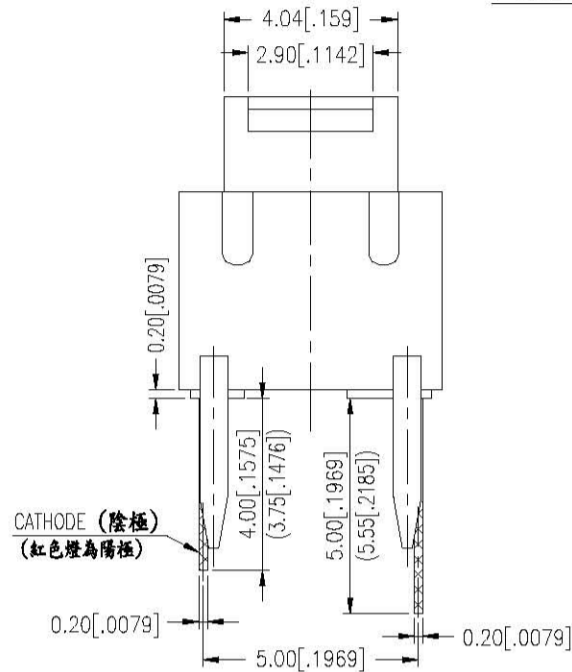
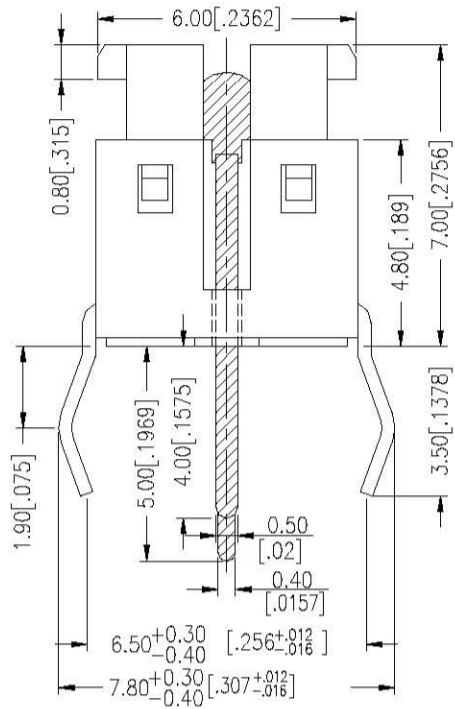
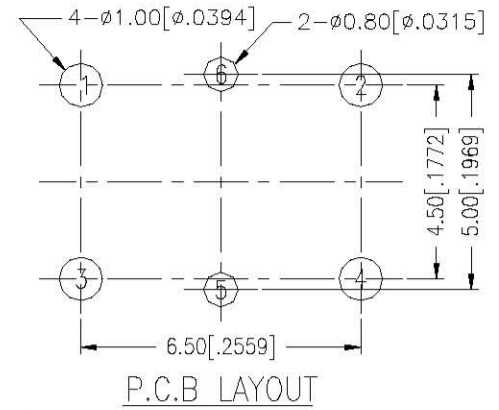
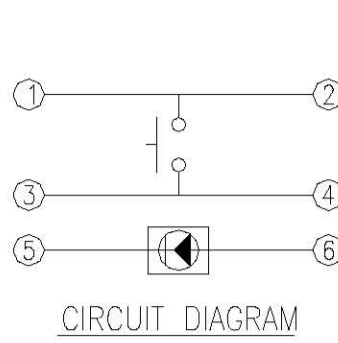
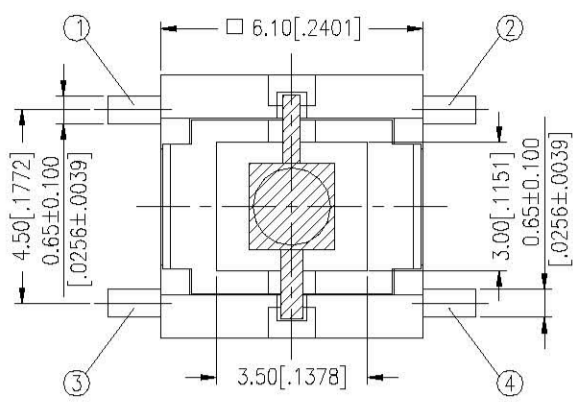


P.C.B LAYOUT



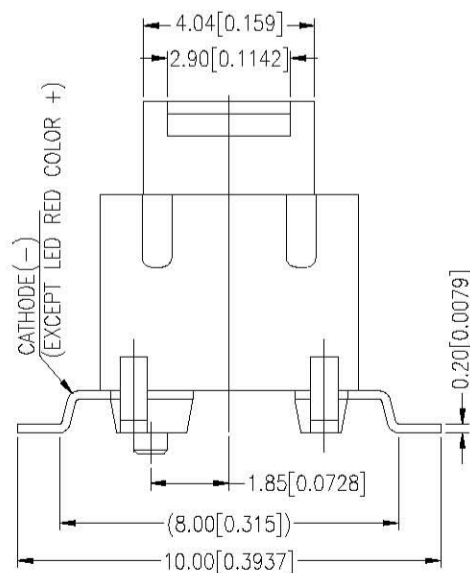
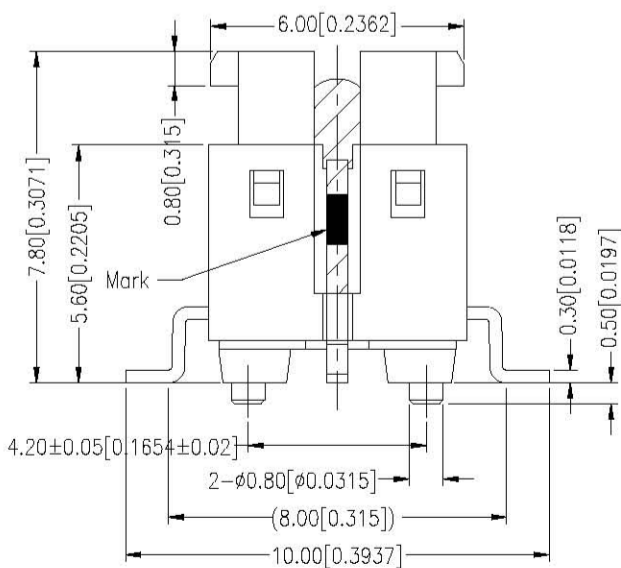
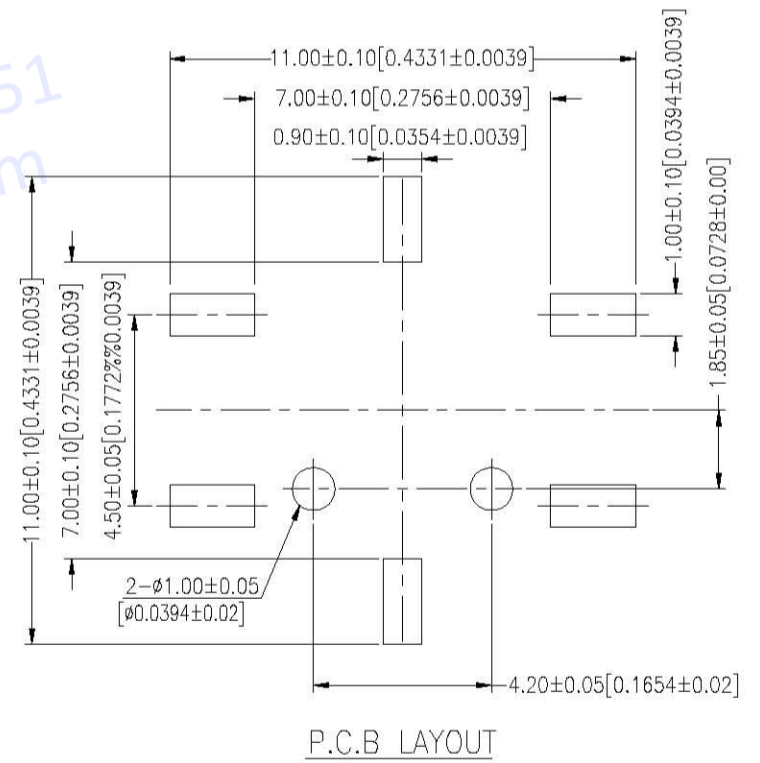
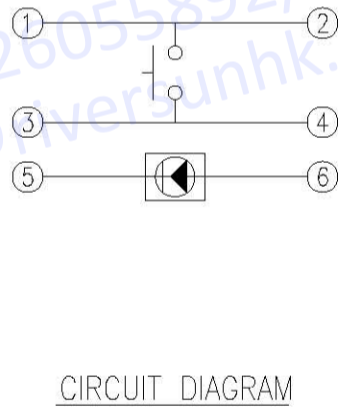
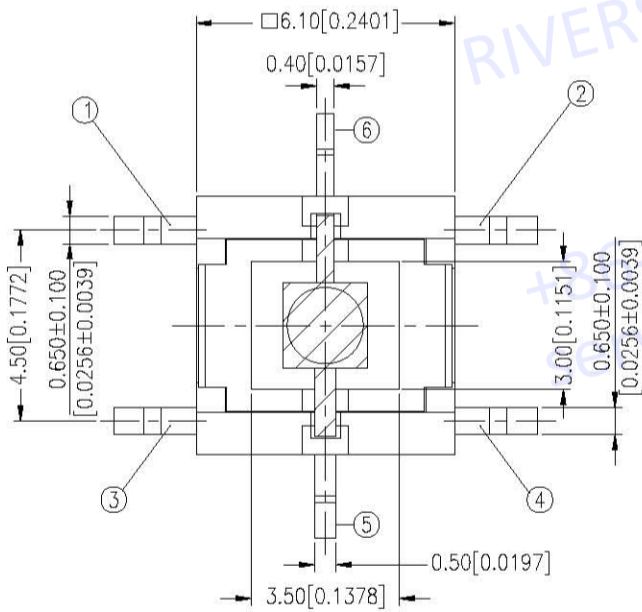
General Tolerance : ±0.2mm

**TLL-6B**



General Tolerance : ±0.2mm

**TLLM-6**



**TLLM-63BAB-V**

Series Name	TLLM-63BAB-V	R   Red   B   Blue
With LED	With LED	Y   Yellow   W   White
S.M.D TERMINAL	S.M.D TERMINAL	G   Green   O   Orange
Operating Force:	1   100g 2   160g 3   260g	AB   Amber/Blue
		LED Color
		LED Shape

\*Customer can provide their own LED light (with specs in details)  
\*LED light B shape white color is not available, A shape orange is not available.

## HOW TO ORDER

T L L □ - 6 □ □ □ - S - □ - □

Package Style :

B = Tube(Only for THT)

T/R=TAPE & REEL(Only for S.M.T)

Soldering :

V = Lead Free Solderable

S = Super Bright

LED Color :

R = Red ; G = Green

B = Blue ; Y = Yellow

O = Orange ; W = White

<Only For TLL-6A>

RG = Red/Green ; GY = Green/Yellow

AG = Amber/Green ; BA = Blue / Amber

<Only For TLL-6B>

LED Specification :



Operating Force :

1 = 100gf, Black

2 = 160gf, Brown

3 = 260gf, White

Prod. Size :

6 = 6X6mm

□=THT

M=S.M.T

L = Tact Switch + LED

Tact Switch + LED

## SPECIFICATION

### △MECHANICAL

Operation Force:

100 ± 50gf TL(L)(M)-61

160 ± 50gf TL(L)(M)-62

260 ± 50gf TL(L)(M)-63

Stroke: 0.20 + / - 0.10 mm

Operation Temperature: -25°C to +70°C

Storage Temperature: -30°C to +80°C

### △ELECTRICAL

Electrical Life: 200,000 cycles min. for TL(L)(M)-61,62,63

Rating:50mA , 12VDC

Contact Resistance: 100mΩ max.

Insulation Resistance: 100MΩ min. 500VDC

Dielectric Strength: 250VAC/ minute

Contact Arrangement: 1 pole 1throw

## MATERIAL

△CONTACT DISC: Stainless with silver cladding

△TERMINAL: Brass with silver cladding

△BASE: Nylon High-temp. Thermoplastic

Color: Black

△STEM: NYLON High-temp. Thermoplastic

Color: Black / TL(L)-61

Brown / TL(L)-62

White / TL(L)-63

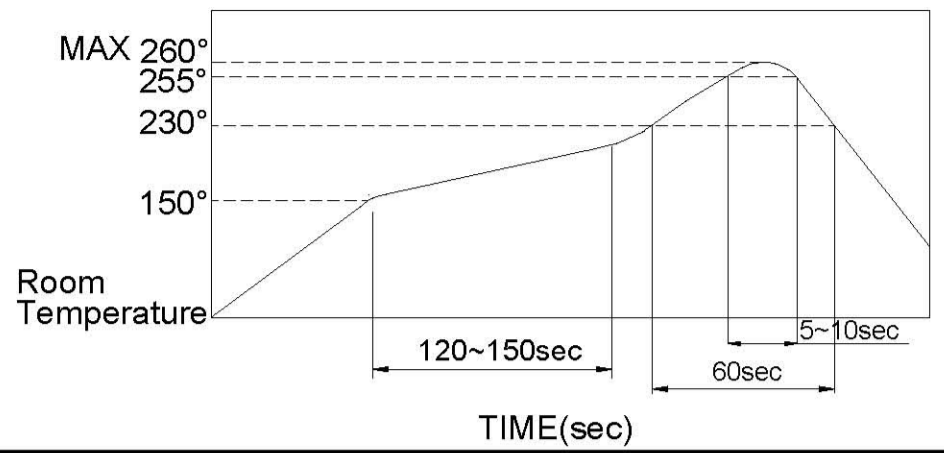
# SOLDERING PROCESS

△WAVE SOLDERING : Recommended solder Temperature at 500°F(260°C) max. 5 seconds. subject to PBC 1.6mm thickness. ( Soldering for through hole type )

△HAND SOLDERING : Use a soldering iron of 30 watts, controlled at 350°C approximately max 5 seconds while applying solder.

△CONDITION FOR SOLDERING : Reflow & non-washable type

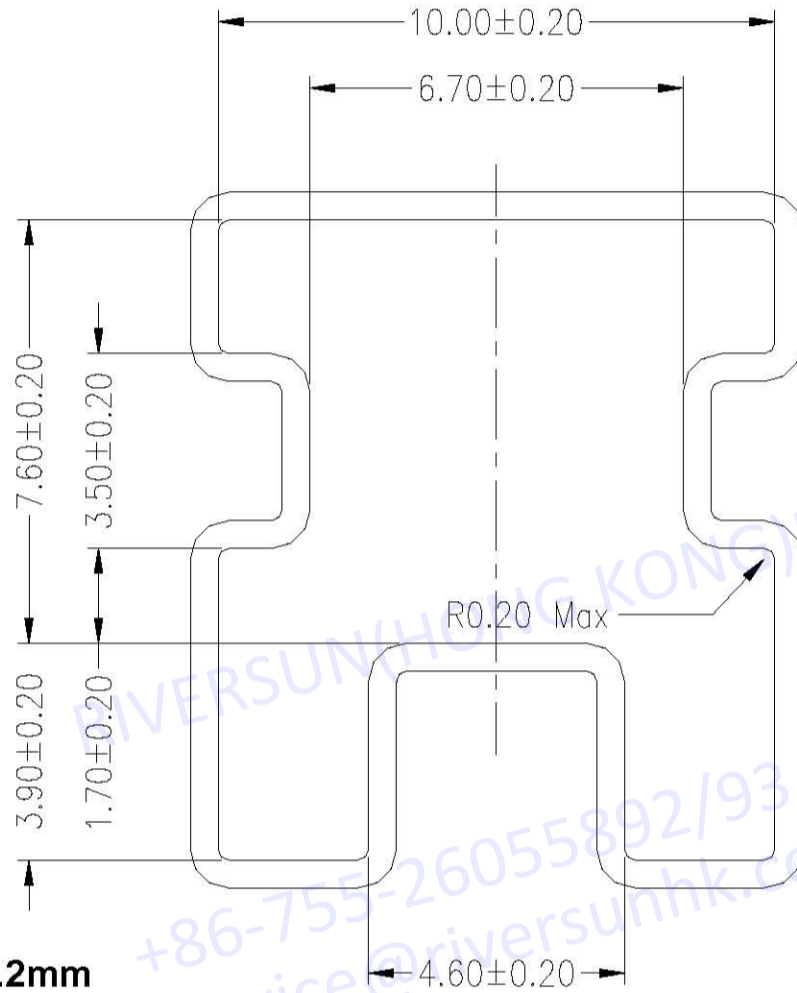
## △Temperature Profile :



# PACKING

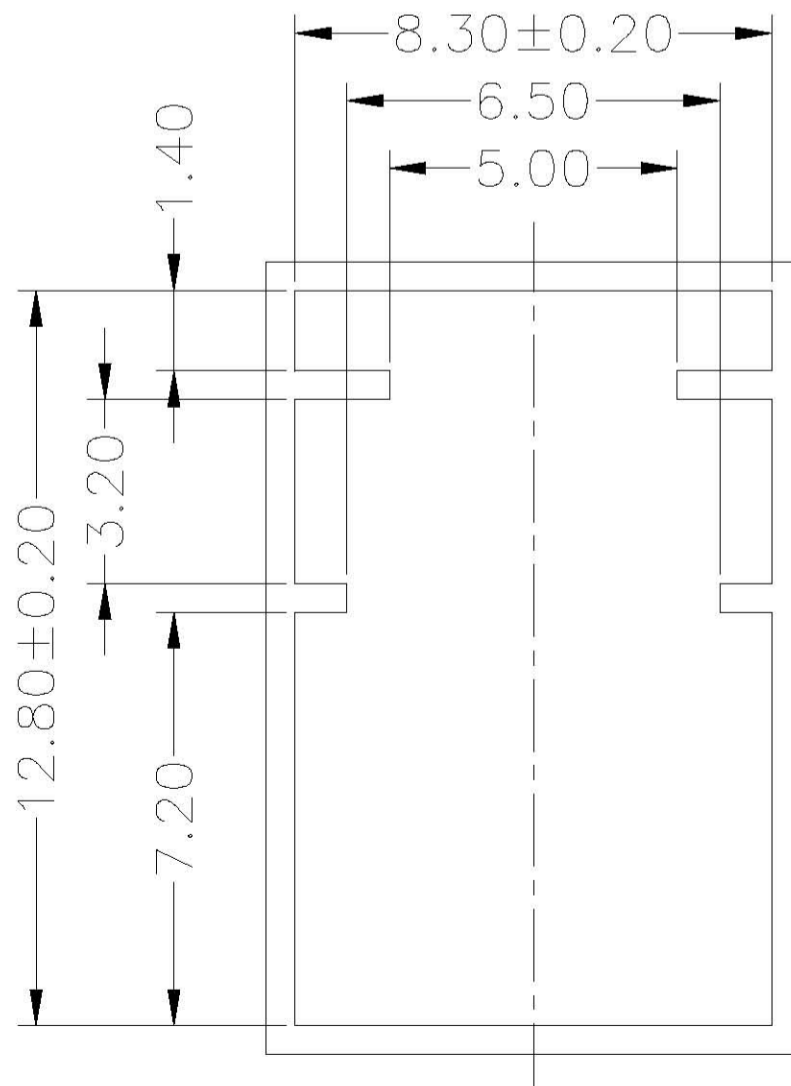
Part Number	Number Per Tube	Number Per Reel
TL(L)-6	75	
TLLM-6		450

TL-6



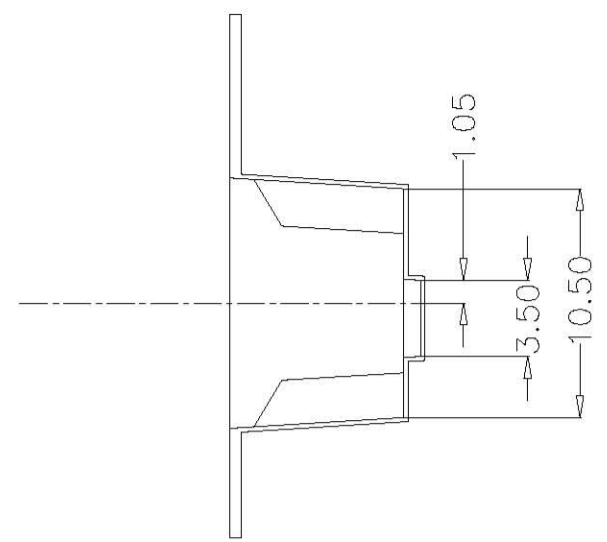
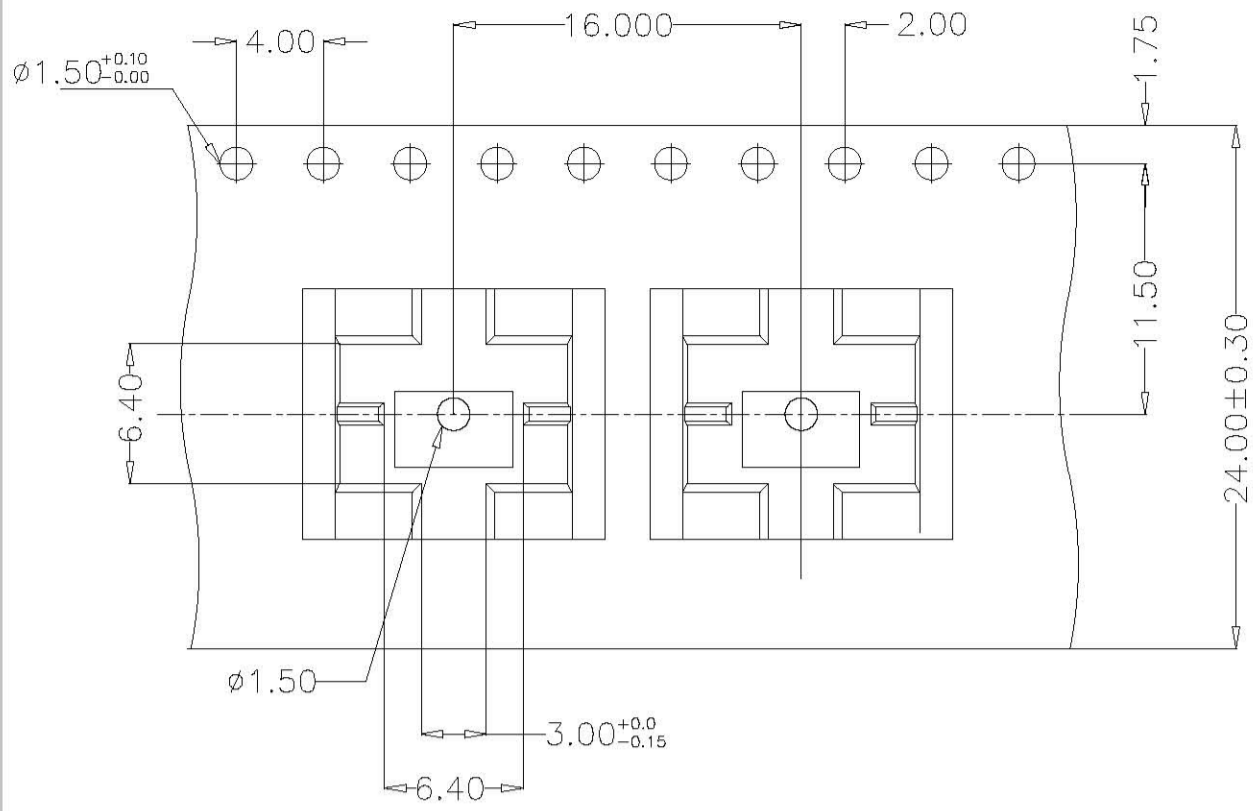
General Tolerance : ±0.2mm

TLL-6

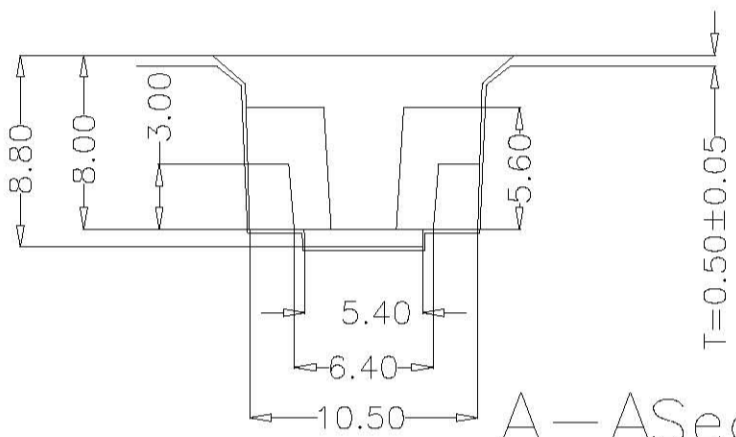


General Tolerance : ±0.2mm

**TLLM CARRIER**



B-B Section



A-A Section

General Tolerance :  $\pm 0.1\text{mm}$

RIVERSUN(HONG KONG)LIMITED

+86-755-26055892/93/51  
service@riversunhk.com