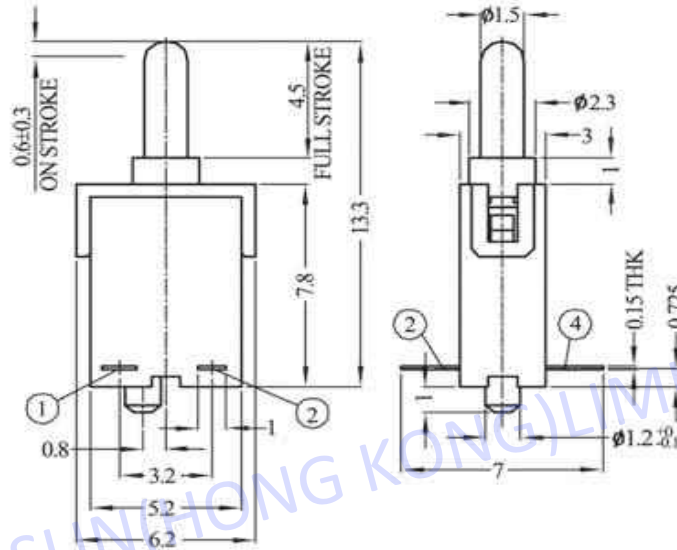
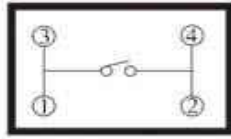


# TC-0036

## CIRCUIT DIAGRAM



**RATING: DC 30V 0.1A**

### 轻触开关主要技术特性

### The Main Technical Characteristic Tact Switch

额定负荷	DC 30V 0.1A	操作温度	-16°C to 60°C
<b>Rated Load</b>		<b>Operating Temperature</b>	
接触电阻	< 200 mΩ	寿命	50,000 次
<b>contact Resistance</b>		<b>Life Test</b>	
绝缘电阻	> 100 MΩ	作用力	70gf ± 20gf
<b>Insulation Resistance</b>		<b>Operating Force</b>	
耐电压	250V 2mA/min		